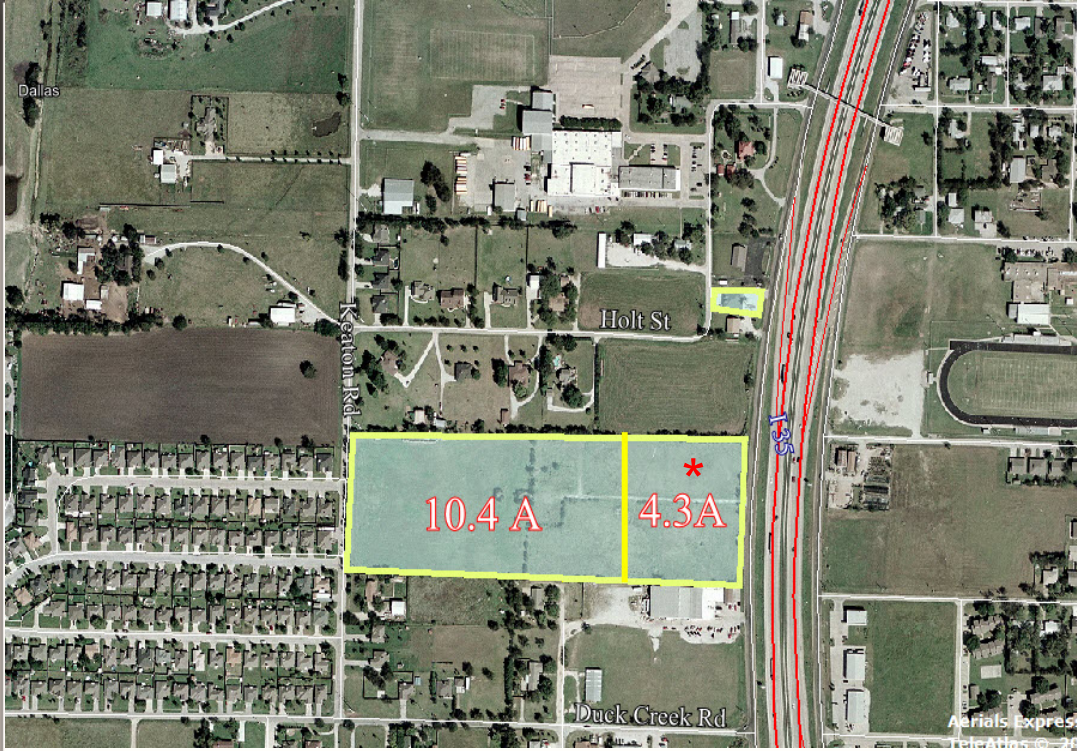


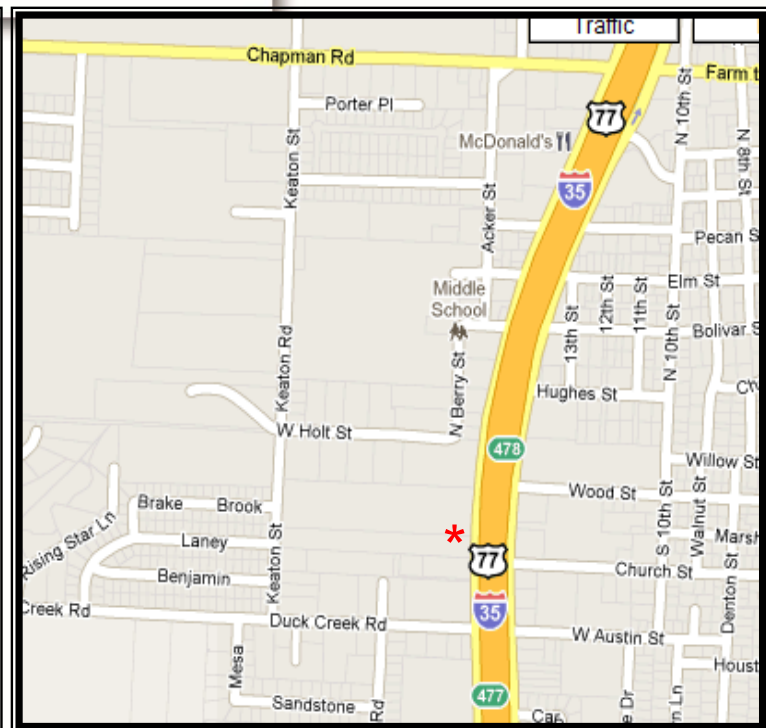
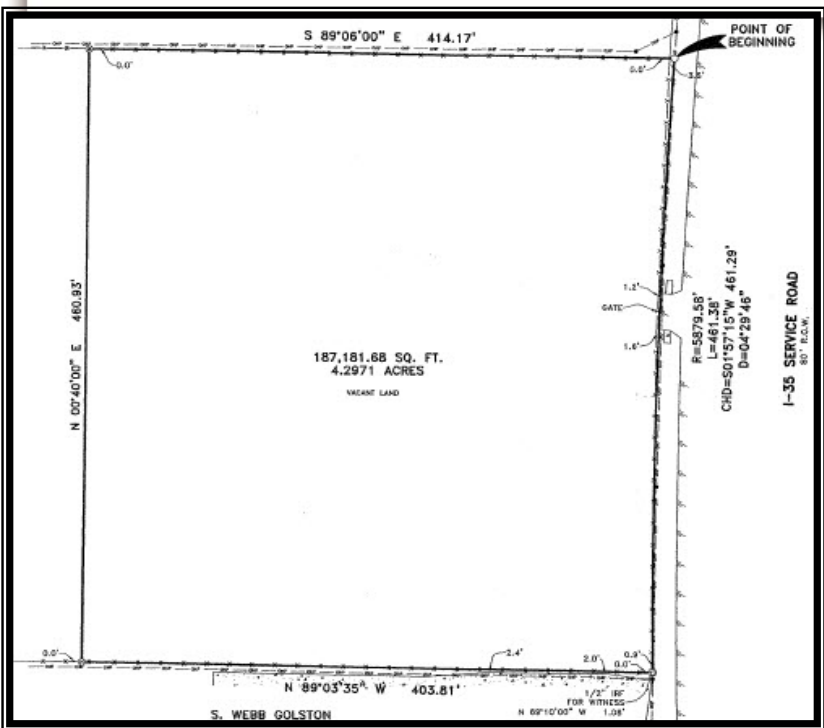
# +/- 4.3 Acres Highway Commercial Land FOR SALE

I-35 & Duck Creek, Sanger, Denton County, TX 76266



## PROPERTY DETAILS

- Bank REO Property
- 461.38 Feet I-35 Frontage
- Dimension: 461' x 414'
- Utilities adjacent to site
- Level Topography
- No Flood Zone
- Price: \$2.75 per square foot



**Lily Chang, CCIM**  
 Vice President / Investment Division  
 972.386.1420 Direct | 972.419.6820 Fax  
[lilychang@henrysmiller.com](mailto:lilychang@henrysmiller.com)



**HENRY S. MILLER BROKERAGE, LLC**  
 Since 1914

AUSTIN DALLAS FORT WORTH HOUSTON SAN ANTONIO

Providence Towers West | 5001 Spring Valley Rd. #1100 | 972.419.4000 | [www.henrysmiller.com](http://www.henrysmiller.com)



The information contained herein was obtained from sources believed reliable, however Henry S. Miller Brokerage, LLC make no guarantees, warranties or representations as to the completeness or accuracy thereof. The information submitted is subject to errors, omissions, changes of price or conditions, prior sale or lease, or withdrawal without notice. Any projections, assumptions or estimates are for illustrative purposes only. Recipients should conduct their own investigations.